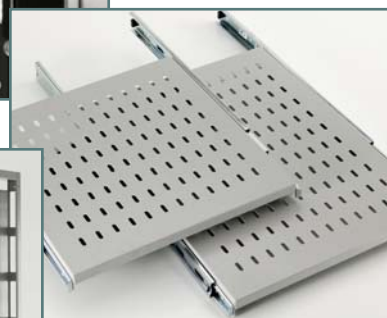




CABINETS

Connectix have been supplying networking products to the data and voice industry since 1993, and since then have grown to become one of the leading UK based manufacturers in the market. Cabinets were added to the Connectix portfolio in 1998, complementing the successful copper cabling and Optix range, and since then demand has grown rapidly. Connectix now dispatches well in excess of 10, 000 cabinets per year.

At Connectix our commitment to innovative design and development ensures our customers always receive the very best products for their specific needs, and our wide range of cabinets are no exception. With a strong emphasis on quality and customer service, Connectix have built up an extensive and loyal installer base who have installed Connectix Cabling System products into some of the most prestigious sites in Europe.



Design, Manufacture & Distribution

Connectix have vast stocks of the popular wall mounted and floor standing cabinets, all available for next day delivery. Special requirements such as different colours or door variations can also be catered for using our bespoke service. All floor standing cabinets are supplied on pallets to make transportation and handling easy and are carefully wrapped with protective packaging to ensure safe arrival on site. Transport castors are also supplied for easy movement within buildings.

With an in-house design and development team, and extensive prototyping and testing equipment, Connectix strive to stay ahead of the market producing innovative, cost effective products that exceed customer expectations. Constant market appraisal and review, coupled with customer feedback, help the design team to continuously update and improve the product range.

functional and aesthetically pleasing products. Extensive use of computer controlled, fully automated manufacturing equipment ensures consistent accuracy. With strict ISO 9001 control throughout the design and manufacturing process, excellent quality is assured.



Connectix are always committed to excellent design and quality workmanship which results in reliable,

- x In House Design
- x UK Manufacturing
- x Quality Control
- x Extensive Stock
- x Next Day Delivery



The Server Range

Connectix Server Cabinets have been designed to offer the optimum housing for Servers and Networking Hardware. Vent panels in the front doors, perforated rear doors, and vented roof all add up to offer maximum ventilation; while lockable doors all round provide essential security.

All doors are fully removable with quick release hinges for easy equipment installation, and the large floor aperture gives maximum cable access. The 800 wide variation has additional cable access holes next to the rack profiles to allow easy routing of cables from the front to the rear of the cabinet.

The high quality attractive black finish ensures the cabinet will complement high specification office environments.



PAGE 4



Note:
Cabinets are shown with transit castors.
All Server cabinets should be bolted to the floor, or attached to an optional stabilising Plinth.

Ordering Information - 600 x 1040			
Width (mm)	Depth (mm)	Height	Product Code
600	1040	12u	009-000-130-12
600	1040	18u	009-000-130-18
600	1040	27u	009-000-130-27
600	1040	42u	009-000-130-42
600	1040	45u	009-000-130-45
600	1040	47u	009-000-130-47

Ordering Information - 800 x 1040			
Width (mm)	Depth (mm)	Height	Product Code
800	1040	27u	009-000-135-27
800	1040	42u	009-000-135-42
800	1040	45u	009-000-135-45
800	1040	47u	009-000-135-47

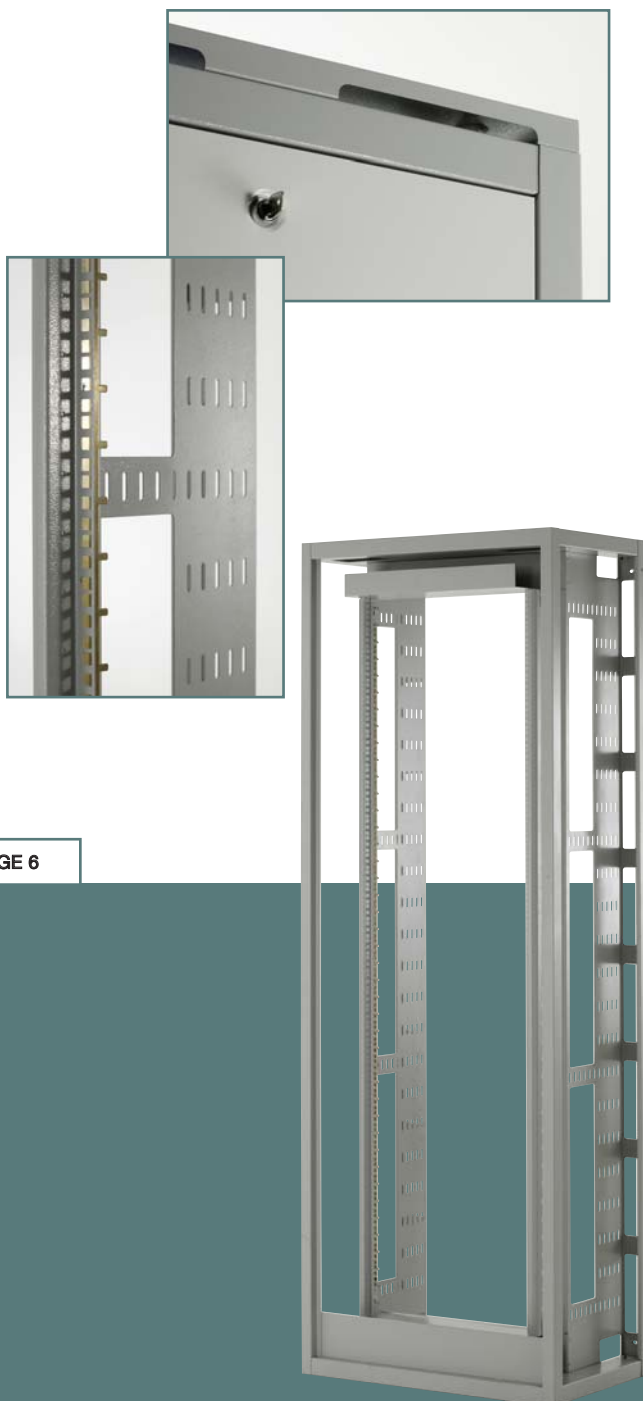


The Floor Standing Range

The Floor Standing Range

The standard floor standing range of cabinets is available in a range of configurations and are supplied fully assembled. Each cabinet features a vented top and adjustable 19" mounting posts front and rear. Lockable lift off sides and removable front and rear doors offer maximum access for termination and patching.

The cabinet framework is finished in goose grey with ash grey side panels and doors. An inset Perspex front door is fitted as standard.



Ordering Information - 600 x 600			
Width (mm)	Depth (mm)	Height	Product Code
600	600	18u	009-000-001-18
600	600	24u	009-000-001-24
600	600	27u	009-000-001-27
600	600	32u	009-000-001-33
600	600	39u	009-000-001-39
600	600	42u	009-000-001-42
600	600	45u	009-000-001-45

Ordering Information - 600 x 780			
Width (mm)	Depth (mm)	Height	Product Code
600	780	18u	009-000-009-28
600	780	24u	009-000-009-34
600	780	27u	009-000-009-37
600	780	32u	009-000-009-32
600	780	39u	009-000-009-49
600	780	42u	009-000-009-52
600	780	45u	009-000-009-64

Ordering Information - 780 x 600			
Width (mm)	Depth (mm)	Height	Product Code
780	600	18u	009-000-002-19
780	600	24u	009-000-002-25
780	600	27u	009-000-002-28
780	600	32u	009-000-002-32
780	600	39u	009-000-002-40
780	600	42u	009-000-002-43
780	600	45u	009-000-002-46

Ordering Information - 780 x 780			
Width (mm)	Depth (mm)	Height	Product Code
780	780	18u	009-000-003-19
780	780	24u	009-000-003-25
780	780	27u	009-000-003-28
780	780	32u	009-000-003-32
780	780	39u	009-000-003-40
780	780	42u	009-000-003-43
780	780	45u	009-000-003-46

Ordering Information - Patching Frame	
42u High Density Patching Frame	009-000-052-43



The Wall Mounted Range

The Wall Mounted Range





Ordering Information - Two Part Wall Mount

Depth (mm)	Height	Product Code
500	9u	009-000-007-09
500	12u	009-000-007-12
500	15u	009-000-007-15
500	18u	009-000-007-18
500	21u	009-000-007-21

Ordering Information - Standard Wall Mount

Depth (mm)	Height	Product Code
300	6u	009-000-008-06
300	9u	009-000-008-09
300	12u	009-000-008-12
300	15u	009-000-008-15
300	18u	009-000-008-18
300	21u	009-000-008-21
400	6u	009-000-004-06
400	9u	009-000-004-09
400	12u	009-000-004-12
400	15u	009-000-004-15
400	18u	009-000-004-18
400	21u	009-000-004-21

Ordering Information - Lightweight Wall Mount

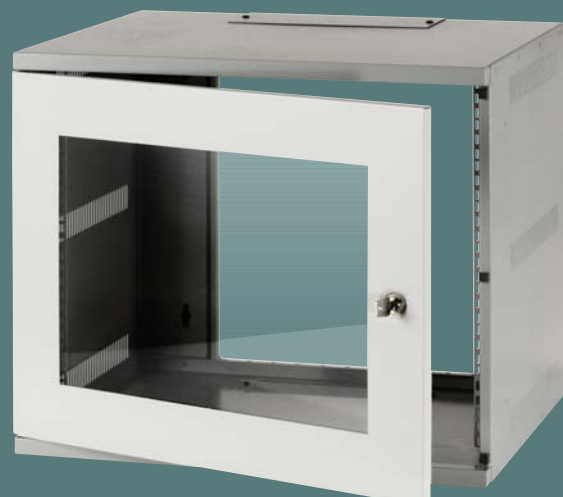
Depth (mm)	Height	Product Code
400	6u	009-000-100-06
400	9u	009-000-100-09
400	12u	009-000-100-12
400	15u	009-000-100-15
400	18u	009-000-100-18
400	21u	009-000-100-21
600	9u	009-000-001-09
600	12u	009-000-001-12
600	15u	009-000-001-15
600	18u	009-000-001-18
600	21u	009-000-001-12

There are three styles of wall mounting cabinets available to cover a wide range of applications. All have vented sides and cable entry gland plates top and bottom. Removable inset Perspex doors are standard on the three styles for added safety.

The two part cabinet features adjustable 19" profiles at the front and a fixed pair at the rear. A rear door provides easy access to panels and equipment, and removable sides makes access even easier. The cabinet can be fully locked for added security.

The standard wall mount has one pair of adjustable profiles and a solid back, whereas the lightweight option has one pair of fixed profiles and a large cut out panel at the back.

All the wall mount cabinets are finished in goose grey with ash grey doors.



Cabinet Accessories



Ordering Information - Mini Cabinet

10u Mini Cabinet - Black	009-000-004-34
10u Mini Cabinet - Grey	009-000-004-44

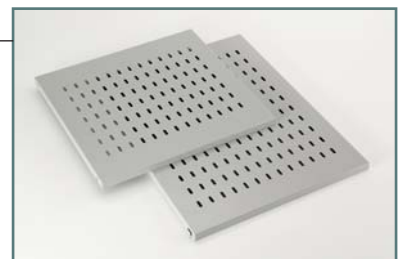
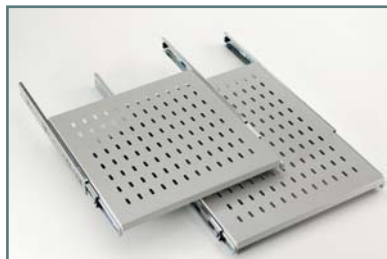
Ordering Information - Home Cabinet

10u Home Cabinet - White	009-000-004-60
--------------------------	----------------



Ordering Information - Fixed Shelving

Fixed Shelf 440 deep	009-000-005-06
Fixed Shelf 570 deep	009-000-022-46
Fixed Server Shelf 720 deep 50kg	009-000-018-05
Fixed Server Shelf 720 deep 100kg	009-001-018-10
Fixed Server Shelf 820 deep 50kg	009-000-018-20
Fixed Server Shelf 820 deep 100kg	009-000-018-25



Ordering Information - Telescopic Shelving

Telescopic Shelf 440mm	009-000-005-22
Telescopic Shelf 570mm	009-000-005-23
Telescopic Server Shelf 720 deep 50kg	009-000-024-05
Telescopic Server Shelf 720 deep 100kg	009-000-024-10
Telescopic Server Shelf 820 deep 50kg	009-000-024-20
Telescopic Server Shelf 820 deep 100kg	009-000-024-25



Ordering Information - Cantilever Shelving

Cantilever Shelf 190 deep 1u	009-000-020-01
Cantilever Shelf 350 deep 2u	009-000-020-02
Cantilever Shelf 500 deep 3u	009-000-020-03



Ordering Information - Wall Mount Frames

19" Wall Mounted Frame		
Depth (mm)	Height	Product Code
200	2u	009-000-032-02
200	3u	009-000-032-03
200	4u	009-000-032-04
200	6u	009-000-032-06
350	3u	009-000-034-03
350	6u	009-000-034-06

PAGE 10



Ordering Information - PDU Horizontal

PDU 4 Way Horizontal	009-000-005-24
PDU 5 Way Horizontal	009-000-005-25
PDU 6 Way Horizontal	009-000-005-26

Ordering Information - PDU Vertical

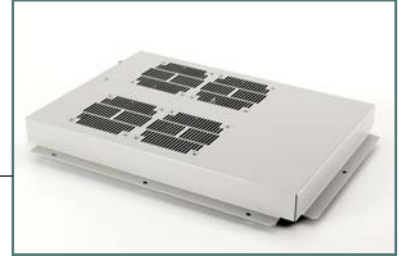
PDU 4 Way Vertical	009-000-005-07
PDU 5 Way Vertical	009-000-005-08
PDU 6 Way Vertical	009-000-005-09
PDU 8 Way Vertical	009-000-005-10
PDU 10 Way Vertical	009-000-005-11
PDU 12 Way Vertical	009-000-005-12





Ordering Information - Plinths

Plinth 600 x 600mm	009-000-005-15
Plinth 600 x 780mm	009-000-005-16
Plinth 780 x 600mm	009-000-005-40
Plinth 780 x 780mm	009-000-005-41
Server Plinth 600 x 1040mm	009-000-129-05
Server Plinth 800 x 1040mm	009-000-129-10



Ordering Information - Fan Units

4 Way Fan Unit	009-000-003-14
2 Way Fan Unit	009-000-003-13
4 Way Server Fan Unit	009-000-128-05
2 Way Server Fan Unit	009-000-128-10



Ordering Information - Standard Duty

Standard Duty Castors - Set of 4	009-000-005-01
----------------------------------	----------------

Ordering Information - Medium Duty

Medium Duty Castors - Set of 4	009-000-005-02
--------------------------------	----------------



Ordering Information - Heavy Duty

Heavy Duty Castors - Set of 4	009-000-005-03
-------------------------------	----------------

Ordering Information - Jacking Feet

Jacking Feet - Set of 4	009-000-005-04
-------------------------	----------------



Ordering Information - Cage Nuts & Bolts

Cage Nuts - Bag of 50	009-000-010-01
-----------------------	----------------



Ordering Information - Earth Bonding Kit

Earth Bonding Kit - 4 Wire	009-000-005-82
----------------------------	----------------

Ordering Information - Baying Kit

Baying Kit - 4 Piece	009-000-005-04
Server Baying Kit	009-000-005-81





Head Office

Connectix Limited
33 Broomhills Industrial Estate
Braintree, Essex CM7 2RW
Telephone: +44 (0)1376 346600
Facsimile: +44 (0)1376 346620
Email: sales@connectix.co.uk
Website: www.connectix.co.uk

Birmingham Office

Telephone: +44 (0)121 745 3391
Facsimile: +44 (0)121 745 3331
Email: birmingham@connectix.co.uk

Daventry Office

Telephone: +44 (0) 1327 312622
Facsimile: +44 (0) 1327 300809
Email: daventry@connectix.co.uk

Dublin Office

Telephone: +353 (0)1 623 6751
Facsimile: +353 (0)1 623 6759
Email: sales@connectix.ie

Edinburgh Office

Telephone: +44 (0)131 440 4012
Facsimile: +44 (0)131 440 4901
Email: edinburgh@connectix.co.uk

London Office

Telephone: +44 (0)20 7790 7740
Facsimile: +44 (0)20 7790 7911
Email: london@connectix.co.uk

Dubai Office

Telephone: +971 (0) 4361 5513
Facsimile: +971 (0) 4361 5513
Email: sales@connectix.ae

Mauritius Office

Telephone: +230 261 8663
Faxsimile: +230 261 8577
Email: sales@connectix.mu

